

Self-evaluation Summary Dashboard

Produce custom dashboards at fftaspire.org

Northcote Primary School

LA Liverpool DFE 3412110 Produced October 2019

Reports

- Overview
- Attainment & Progress
- Pupil groups
- Subjects
- Disadvantaged pupils
- Scatterplot
- Context

What it tells you

- What are the strengths and weaknesses of your school?
- How does attainment and pupil progress at your school compare to the national average?
- How are you performing in different subjects?
- Do you have any under-performing groups of pupils?
- How might the context of your school affect performance?
- How does pupil attendance compare to the national average?

About the data shown



Filters

No filters chosen (all pupils included)
You can use filters to view a subset of pupils



Indicators

% Expected standard+ (Re, Wr, Ma)
Average Scaled Score (Re, Ma)



Value added

Achievement is compared with similar pupils nationally. The FFT VA model uses prior attainment, gender and month of birth as a starting point.

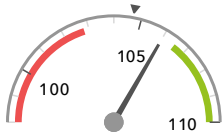
Overview

KS2 Attainment 2019 · Actual results

60 pupils

Average Scaled Score (Re, Ma)

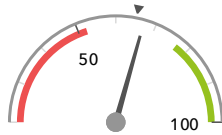
106.0



In line with the national average (104.7) ◀

% Expected standard+ (Re, Wr, Ma)

67%



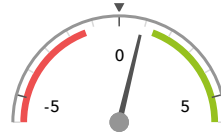
In line with the national average (65%) ◀

KS2 Progress 2019 · Value Added

56 matched pupils

Average Scaled Score (Re, Ma)

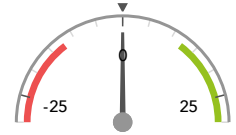
+0.9 ↓



In line with the national average (0) ◀

% Expected standard+ (Re, Wr, Ma)

-0% ↓



In line with the national average (0%) ◀

KS2 higher and lower performing pupil groups 2019

	Higher performing	Lower performing
Overall achievement pupil progress	Not FSM (ever) (21) + Not FSM (in last 6 years) (22) + Joined in Y5 or Y6 (5)	
KS2 reading achievement pupil progress	Joined in Y5 or Y6 (5) Not FSM (ever) (21) Not FSM (in last 6 years) (22)	FSM (ever) (35) ↓ FSM (in last 6 years) (34) ↓ Autumn Term (20)
KS2 writing achievement pupil progress	Not FSM (ever) (21) + Not FSM (in last 6 years) (22) + Female (28) +	SEN Support (9)
KS2 mathematics achievement pupil progress	Not FSM (in last 6 years) (22) + Not FSM (ever) (21) + Higher attainers (20) +	
KS2 grammar, punctuation & spelling achievement pupil progress	Joined in Y5 or Y6 (5) Spring Term (15) Female (28) +	

Attainment & progress

KS2 Attainment 2019

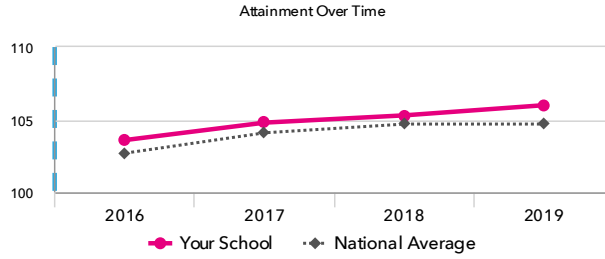
60 pupils

Average Scaled Score (Re, Ma)

106.0



In line with the national average (104.7)



KS2 Progress 2019

56 matched pupils

Average Scaled Score (Re, Ma)

+0.9 ↓



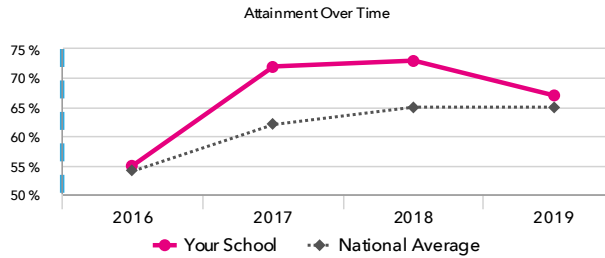
In line with the national average (0)

% Expected standard+ (Re, Wr, Ma)

67%



In line with the national average (65%)



% Expected standard+ (Re, Wr, Ma)

-0% ↓



In line with the national average (0%)

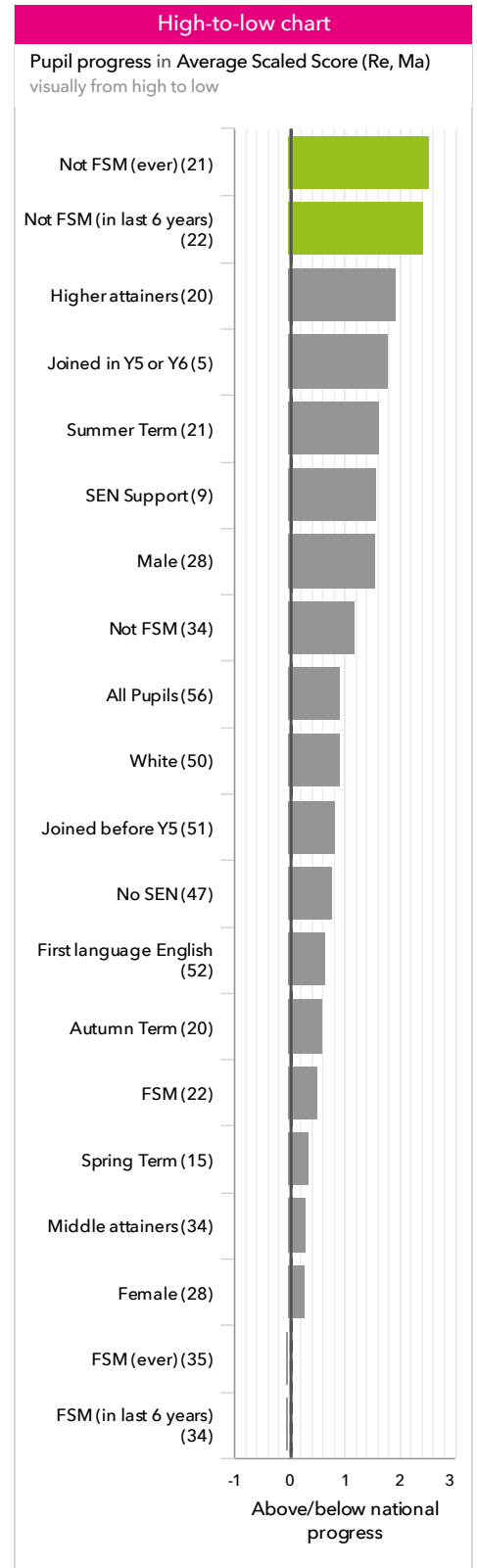
KS2 performance summary

	Actual results			Pupil progress		
	2017	2018	2019	2017	2018	2019
Number of Pupils / % Matched	47	59	60	96%	98%	93%
% Expected standard+ (Re, Wr, Ma)	72%	73%	67%	+20% +	+18% +	-0% ↓
% Higher standard (Re, Wr, Ma)	6%	10%	15%	-1%	+2%	+6%
Average Scaled Score (Re, GPS, Ma)	105.5	105.7	106.8	+1.5 +	+3.5 +	+1.4 + ↓
Average Scaled Score (Re, Ma)	104.8	105.3	106.0	+1.9 +	+3.1 +	+0.9 ↓
% Expected standard+ Reading	74%	76%	78%	+9%	+9%	+2%
% Higher standard Reading	19%	20%	28%	-0%	-2%	+0%
Scaled Score Reading	103.1	104.3	104.7	+0.2	+1.7 +	-0.1
% Expected standard+ Writing	85% ↑	85%	83%	+16% + ↑	+15% +	-3%
% Higher standard Writing	15%	22%	37% +	+2%	+6%	+18% +
Scaled Score Writing	103.0 ↑	103.1	104.7 +	+2.8 + ↑	+3.2 +	+1.6 +
% Expected standard+ Maths	91% +	95% +	85%	+22% +	+29% +	+2%
% Higher standard Maths	26%	36% +	33%	+7%	+18% +	+7%
Scaled Score Maths	106.5 +	106.5 +	107.2 +	+3.5 +	+4.8 +	+2.0 + ↓
% Expected standard+ Grammar, Punctuation & Spelling	85%	83%	90% +	+15% +	+15% +	+6%
% Higher standard Grammar, Punctuation & Spelling	23%	31%	45%	-3%	+3%	+10%
Scaled Score Grammar, Punctuation & Spelling	105.7 ↑	105.9	108.1	+0.3	+2.7 +	+1.5
% Expected standard+ Science	83%	86%	80%	-	-	-

Pupil groups

KS2 Pupil groups performance 2019

	Pupils	Actual results		Pupil progress	
		Average Scaled Score (Re, Ma)	% Expected standard+ (Re, Wr, Ma)	Average Scaled Score (Re, Ma)	% Expected standard+ (Re, Wr, Ma)
Summary	All Pupils	60	106.0	67%	+0.9 ↓ -0% ↓
Gender	Male	30	107.2 +	70%	+1.6 -0%
	Female	30	104.7	63%	+0.3 ↓ -0%
DFE Prior Attainment	Higher attainers	20	112.2	95%	+1.9 +1%
	Middle attainers	34	103.2	59%	+0.3 ↓ -0% ↓
	Lower attainers	2	93.0	0%	+1.0 -8%
Pupil Premium	FSM (in last 6 years)	35	103.3	49%	-0.1 ↓ -11% ↓
	Not FSM (in last 6 years)	25	109.7 + ↑	92% +	+2.4 + +16%
FSM	FSM	23	103.3	48%	+0.5 ↓ -10%
	Not FSM	37	107.6	78%	+1.2 +6%
FSM Ever	FSM (ever)	36	103.4	50%	-0.0 ↓ -10% ↓
	Not FSM (ever)	24	109.8 +	92% +	+2.5 + +16%
Term of Birth	Autumn Term	21	107.1	76%	+0.6 +4%
	Spring Term	17	105.0	59%	+0.4 ↓ -7%
	Summer Term	22	105.6	64%	+1.7 +1%
SEN Group	SEN Support	9	103.5	33%	+1.6 ↓ -21%
	EHC Plan	1	104.0	0%	- -
	No SEN	50	106.4	74%	+0.8 +4%
EAL	First language not English	7	107.5	57%	+4.5 +10%
	First language English	53	105.8	68%	+0.6 ↓ -1% ↓
Mobility	Joined in Y5 or Y6	7	104.0	57%	+1.8 +11%
	Joined before Y5	53	106.2	68%	+0.8 ↓ -1% ↓
Ethnicity	White	52	106.0	69%	+0.9 ↓ +0%
	Black African	3	103.7	33%	+2.7 +9%
	Other Asian	2	103.3	50%	-2.8 -17%
	Chinese	1	114.5	100%	+2.3 +2%
	Any Other	2	107.3	50%	+3.3 +1%



Subjects

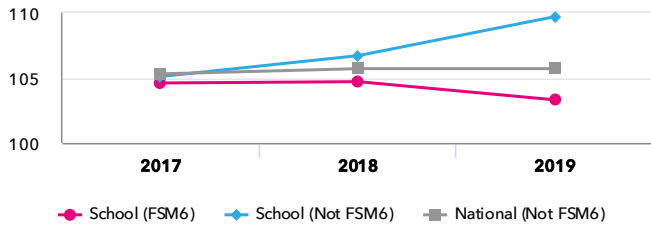
KS2 subject performance 2019

	Actual results			Pupil progress			Actual results over time		
	2017	2018	2019	2017	2018	2019			
Number of Pupils / % Matched	47	59	60	96%	98%	93%			
Reading									
% Expected standard+	74%	76%	78%	+9%	+9%	+2%			
% Higher standard	19%	20%	28%	-0%	-2%	+0%			
Scaled Score	103	104	105	+0.2	+1.7+	-0.1			
Writing									
% Expected standard+	85% ↑	85%	83%	+16%+↑	+15%+	-3%			
% Higher standard	15%	22%	37%+	+2%	+6%	+18%+			
Scaled Score	103 ↑	103	105+	+2.8+↑	+3.2+	+1.6+			
Maths									
% Expected standard+	91%+	95%+	85%	+22%+	+29%+	+2%			
% Higher standard	26%	36%+	33%	+7%	+18%+	+7%			
Scaled Score	107+	106+	107+	+3.5+	+4.8+	+2.0+↓			
Grammar, Punctuation & Spelling									
% Expected standard+	85%	83%	90%+	+15%+	+15%+	+6%			
% Higher standard	23%	31%	45%	-3%	+3%	+10%			
Scaled Score	106 ↑	106	108	+0.3	+2.7+	+1.5			
Science									
% Expected standard+	83%	86%	80%	-	-	-			

Disadvantaged pupils

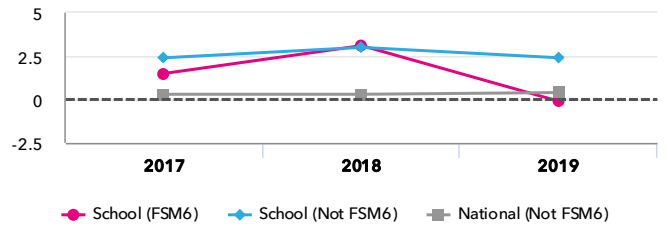
KS2 attainment for disadvantaged pupils 2019

Average Scaled Score (Re, Ma)



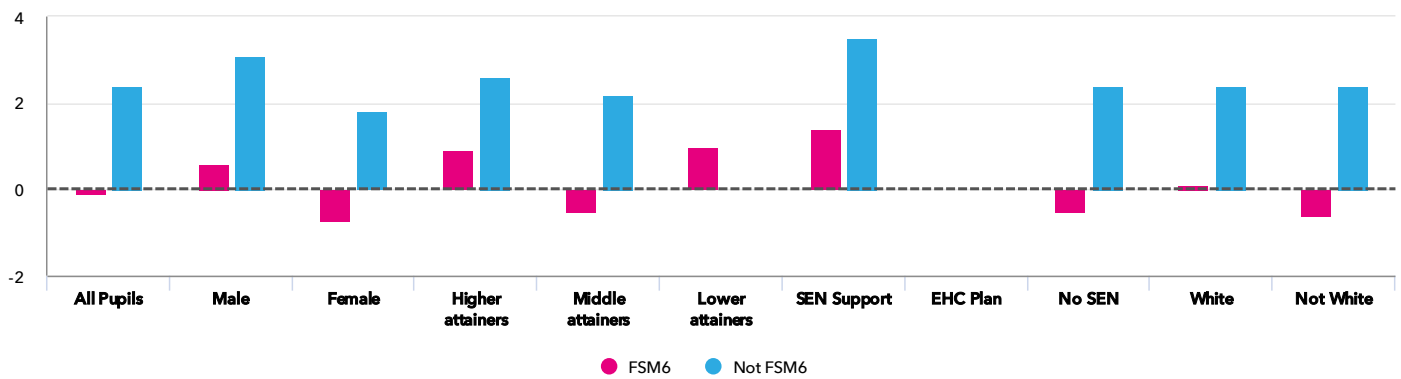
KS2 progress for disadvantaged pupils 2019

Average Scaled Score (Re, Ma)



Progress gap

Average Scaled Score (Re, Ma)

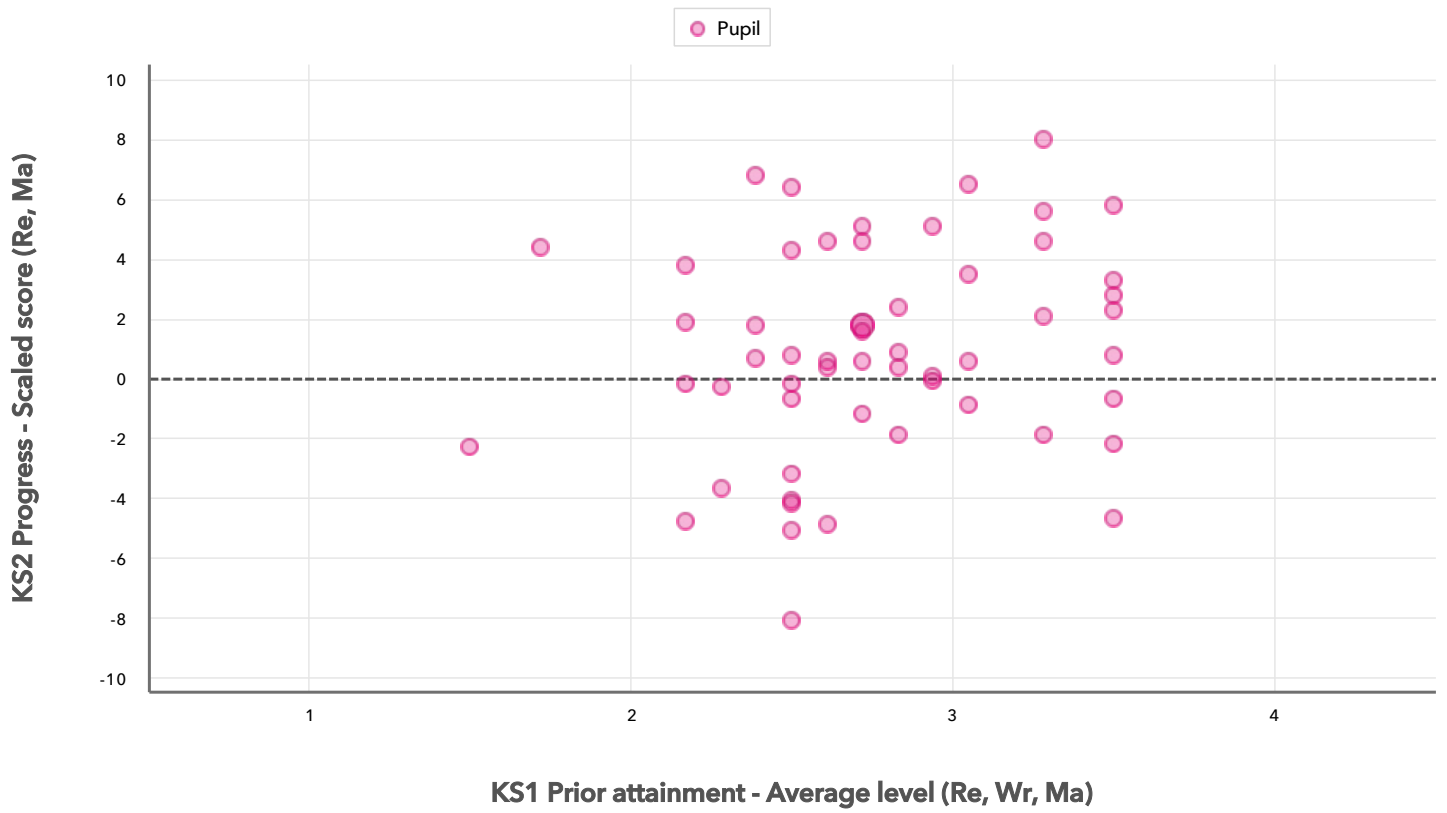


Attainment & progress

Pupils	Attainment			Progress					
	Average Scaled Score (Re, Ma)			Average Scaled Score (Re, Ma)					
	FSM6	Not FSM6	Gap	FSM6	Not FSM6	Gap			
Summary	All Pupils	35	25	103.3	109.7 +↑	-6.4	-0.1 ↓	2.4 +	-2.5
Gender	Male	18	12	104.5	111.4	-6.9	0.6	3.1	-2.5
	Female	17	13	102	108.2	-6.2	-0.7	1.8	-2.5
DFE Prior Attainment	Higher attainers	8	12	111.5	112.7	-1.2	0.9	2.6	-1.7
	Middle attainers	24	10	101.6	107.1	-5.5	-0.5	2.2	-2.7
	Lower attainers	2	-	93	-	-	1	-	-
SEN Group	SEN Support	8	1	102.4	112.5	-10.1	1.4	3.5	-2.1
	EHC Plan	-	1	-	104	-	-	-	-
	No SEN	27	23	103.5	109.8	-6.3	-0.5	2.4	-2.9
Ethnic Group	White	31	21	103.5	109.7	-6.2	-0.0	2.4	-2.4
	Not White	4	4	101.9	109.8	-7.9	-0.6	2.4	-3

Scatterplot

KS2 Pupil scatterplot 2019 60 pupils highlighted by All pupils



Context

Context - Year 6

		Pupils	Comparative profile 2018 / 2019		Absence during Key Stage 2		Persistent absence during Key Stage 2	
		School	School	National	School	National	School	National
Summary	All Pupils	60	100%	100%	-	-	-	-
Gender	Male	30	50%	51%	-	-	-	-
	Female	30	50%	49%	-	-	-	-
DFE Prior Attainment	Higher attainers	20	33%	32%	-	-	-	-
	Middle attainers	34	57%	54%	-	-	-	-
	Lower attainers	2	3%	8%	-	-	-	-
Pupil Premium	FSM (in last 6 years)	35	58%	30%	-	-	-	-
	Not FSM (in last 6 years)	25	42%	70%	-	-	-	-
FSM	FSM	23	38%	16%	-	-	-	-
	Not FSM	37	62%	84%	-	-	-	-
FSM Ever	FSM (ever)	36	60%	30%	-	-	-	-
	Not FSM (ever)	24	40%	70%	-	-	-	-
Term of Birth	Autumn Term	21	35%	33%	-	-	-	-
	Spring Term	17	28%	33%	-	-	-	-
	Summer Term	22	37%	34%	-	-	-	-
SEN Group	SEN Support	9	15%	15%	-	-	-	-
	EHC Plan	1	2%	3%	-	-	-	-
	No SEN	50	83%	82%	-	-	-	-
EAL	First language not English	7	12%	21%	-	-	-	-
	First language English	53	88%	79%	-	-	-	-
Mobility	Joined in Y5 or Y6	7	12%	7%	-	-	-	-
	Joined before Y5	53	88%	93%	-	-	-	-
Ethnicity	White	52	87%	74%	-	-	-	-
	Black African	3	5%	6%	-	-	-	-
	Other Asian	2	3%	3%	-	-	-	-
	Chinese	1	2%	0%	-	-	-	-
	Any Other	2	3%	4%	-	-	-	-